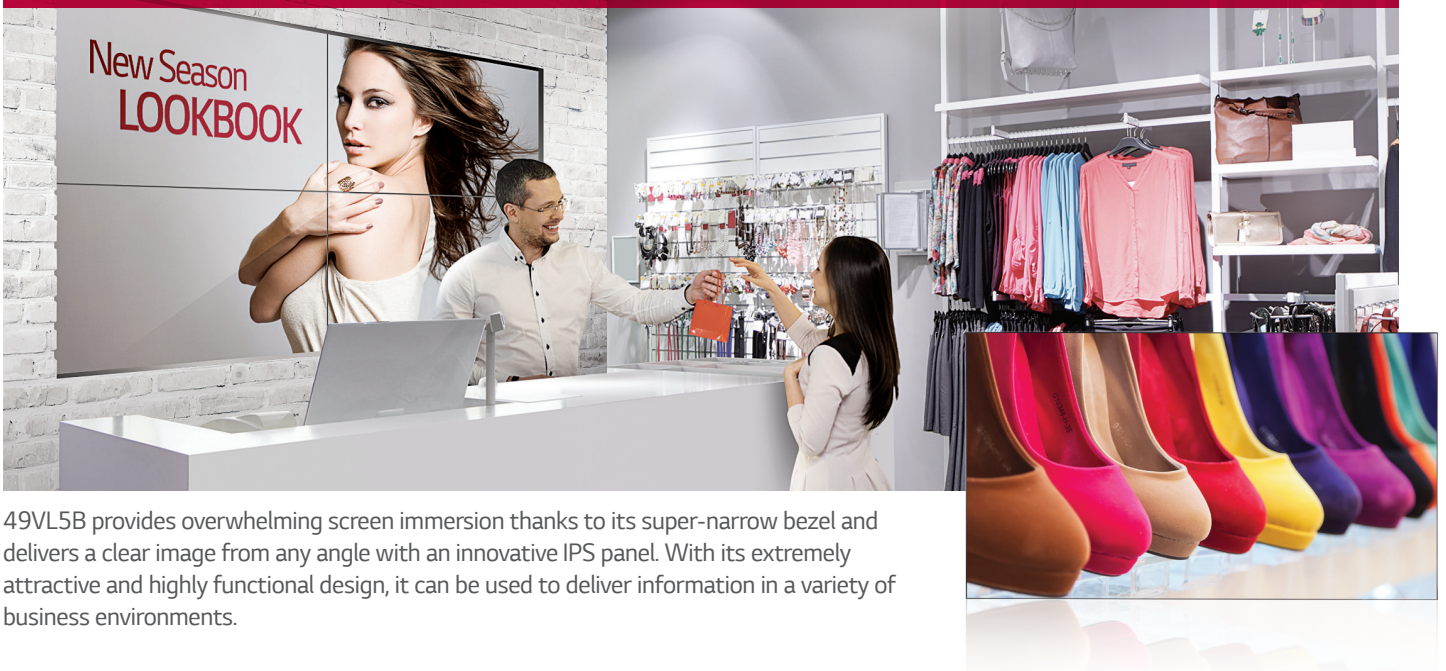


Enhance a Seamless Viewing Experience

Super-Narrow Bezel Video Wall 49VL5B



49VL5B provides overwhelming screen immersion thanks to its super-narrow bezel and delivers a clear image from any angle with an innovative IPS panel. With its extremely attractive and highly functional design, it can be used to deliver information in a variety of business environments.

Key Features

Narrow Bezel



Super-Narrow Bezel

The super-narrow bezel video wall creates a visually stunning digital wall that is efficiently installed, maintained and managed.



Bezel to Bezel
3.5mm
 2.3mm (Left/Top),
 1.2mm (Right/Bottom)

Advanced IPS Technology



Wide Viewing Angle

IPS panel technology means a more advanced control of the liquid crystal display. As a result, it allows users to view the screen from virtually any angle.



Stable Panel

On account of the structure of the liquid crystal in an IPS display, when you touch the screen, there are no flashes or ripple effects due to the rapid recovery.

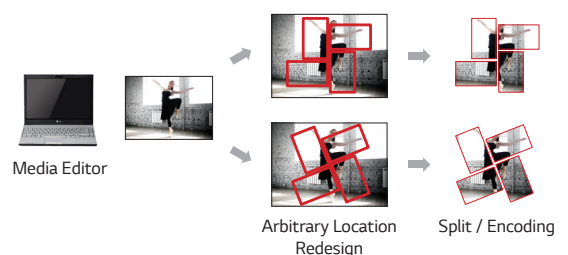


Content Management



SuperSign W for Content Management

Flexible content editing in various layouts, including both regular and irregular video-wall layouts, is made possible in a timely and cost-effective manner without the need for an expensive video-wall console.



Enhance a Seamless Viewing Experience



Screen Size
49"

49VL5B

- Brightness : 450cd/m²
- Bezel to Bezel : 3.5mm
- Depth : 89.7mm
- Interface : HDMI / DVI / RGB / RJ45 / USB / RS232C



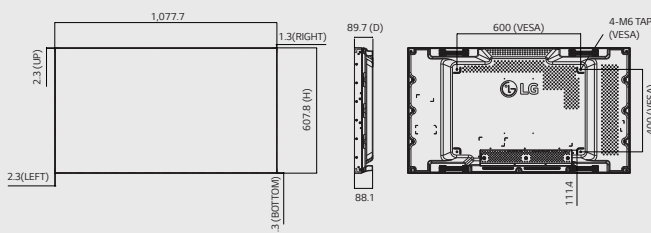
Specifications

| | | 49VL5B |
|-----------------------------------|---------------------------------------|---|
| PANEL | Screen Size | 49" (48.50" measured diagonally) |
| | Panel Technology | IPS |
| | Aspect Ratio | 16 : 9 |
| | Native Resolution | 1,920 x 1,080 (FHD) |
| | Brightness | 450cd/m ² |
| | Contrast Ratio | 1,300 : 1 |
| | Viewing Angle (H x V) | 178 x 178 |
| | Response Time | 8ms (G to G) |
| | Surface Treatment | Hard coating (3H), Anti-glare treatment of the front polarizer (Haze 10%) |
| | Life time | 50,000 Hrs |
| CONNECTIVITY | Orientation | Portrait & Landscape |
| | Input | HDMI, DVI-D, RGB |
| | Output | DVI-D |
| PHYSICAL SPECIFICATION | External Control | RS232C (In/Out), RJ45, IR Receiver, USB |
| | Bezel Color | Black |
| | Bezel Width | 2.3mm (Left / Top), 1.2mm (Right / Bottom) |
| | Monitor Dimension (W x H x D) | 1,077.7 x 607.8 x 89.7mm |
| SPECIAL FEATURES | Weight (Head) | 17.8kg |
| | Carton Dimensions (W x H x D) | 1,214 x 778 x 263mm |
| | Packed Weight | 22.8kg |
| | VESA™ Standard Mount Interface | 600 x 400mm |
| ENVIRONMENTAL CONDITIONS | | Temperature Sensor, Tile Mode (Up to 15x15), Natural Mode@Tile Mode, Energy Saving, Smart Energy Saving, File Play with USB |
| POWER | Operation Temperature Range | 0°C to 40°C |
| | Operation Humidity Range | 10% to 80% |
| | Power Supply | 100-240V~, 50/60Hz |
| STANDARD (CERTIFICATION) | Power Type | Built-in Power |
| | Power Typ. | 90W |
| | Power Consumption Smart Energy Saving | 40W |
| MEDIA PLAYER COMPATIBILITY | Safety | UL / cUL / CB / TUV / KC |
| | EMC | FCC Class "A" / CE / KCC |
| | ErP / Energy Star | NA / Yes (Energy Star 6.0) |
| SOFTWARE COMPATIBILITY | Slot PC compatible (optional) | No |
| | External Media player Attachable | Yes |
| ACCESSORY | SuperSign-W/Lite | Yes |
| | SuperSign-C | Yes |
| Accessory | | Remote Control, Power Cable, DVI Cable, Manual, IR Receiver, RS-232C Cable, Guide Bracket, Screw |
| Optional Accessory | | Wall Mount (Landscape : WM-L640V, Portrait : WM-P640V) |

Dimension (unit : mm)

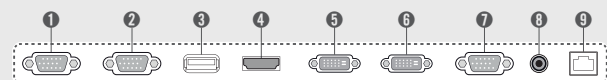
49"

1,077.7 x 607.8 x 89.7mm / 17.8kg



Connectivity

- | | | |
|---------------|-----------|-----------------------|
| 1 RS-232C IN | 4 HDMI IN | 7 RGB/AV/COMPONENT IN |
| 2 RS-232C OUT | 5 DVI IN | 8 IR IN |
| 3 USB | 6 DVI OUT | 9 LAN |



Download LG Commercial Display Mobile App



More info www.lgcommercial.com

YouTube youtube.com/c/LGCommercialDisplay

LG may make changes to specifications and product descriptions without notice.
Copyright © 2016 LG Electronics Inc. All rights reserved. "LG Life's Good" is a registered of LG Corp.
The names of products and brands mentioned here may be the trademarks of their respective owners.

